



# Ablemail Electronics

A Division of Merlyn Electronics

Merlyn House,  
Merlyn Rd,  
Salford, M6 6EL  
Tel: +44(0)161 745 7697  
Fax: +44(0)161 737 5615  
info@ablemail.co.uk  
www.ablemail.co.uk

**PART NUMBER : AMR24-24-15**

## DESCRIPTION :

This unit is a software controlled switching type voltage converter intended for use on vehicles with a 24V electrical system to power 24V accessories. The unit can support 15A continuous output loads. The unit has current output overload protection and over temperature protection . Both protection modes reset automatically. If a greater current is required units can be run in parallel or a bigger unit selected from the range

The high speed switching converter provides a low noise output (<50mV) which is very closely regulated against variation of input voltage and changes in output load current This makes the unit suitable for supplying even the most sensitive loads . As the unit contains an upconverter it is ideal for supplying loads over long cable lengths with no reduction in output voltage as in caravans and heavy goods vehicles .

The 24V input and 24V outputs share a common negative The output can be be configured to turn on when a vehicle engine is running (engine run detection) or on a voltage signal (Ignition Control) .

An interface can be added to allow remote enable/disable of the output voltage and real time adjustment of the output voltage. The interface has outputs to allows information to be passed to an external power management system . An led indicates when the converter is running and provides fault indication and the Interface card allows remote indication (cab display) to be added or signals to be passed to the other elctronic systems .

A serial interface is fitted as standard and this in conjunction with the **Ablemail Software Interface** allows a customer to make configuration changes. The serial interface and powerful in built microcontroller and software allow the converter to work as the system power management controller . The serial interface also allows external electronicis to control the converter .

The unit is assembled in an aluminium extruded case, this allows reliable operation in harsh vehicle environments and areas of high ambient temperatures. It can be supplied with a variety of connection options see the **Ablemail Hardware Options**

This product is part of a large range and if this product does not meet your requirement, please contact our technical department to see if we can meet your exact needs.

<b>ISOLATION</b>	Non-Isolated									
<b>INPUT VOLTAGE</b>	24Volt nominal vehicle supply (8-32V)									
<b>OUTPUT VOLTAGE</b>	24V ± 5%									
<b>OUTPUT LOAD CURRENT</b>	15 Continuous									
<b>NO LOAD INPUT CURRENT</b>	Max 4mA @ 24V input									
<b>PROTECTION</b>	Output overload & over temperature protection with fully automatic reset									
<b>OPERATING TEMPERATURE</b>	Maximum 70°C. Minimum -30°C									
<b>STANDARDS</b>	E11 Approval-Immunity requirements UNECE regulation 10 issue 4 Which covers all aspects of EN50489:2010 & CE Approval-Immunity to requirements of EN61204-3									
<b>SIZE AND WEIGHT</b>	Length: 150mm, Height: 38mm, Width: 93mm, 450g									
<b>CONNECTIONS</b>	200mm flying leads of thin wall auto cable. Wiring Connections:									
	<table border="1"> <tr> <td>24V Input</td> <td>Positive</td> <td>Red</td> </tr> <tr> <td>24V Output</td> <td>Positive</td> <td>White</td> </tr> <tr> <td>Common</td> <td></td> <td>Black</td> </tr> </table>	24V Input	Positive	Red	24V Output	Positive	White	Common		Black
24V Input	Positive	Red								
24V Output	Positive	White								
Common		Black								

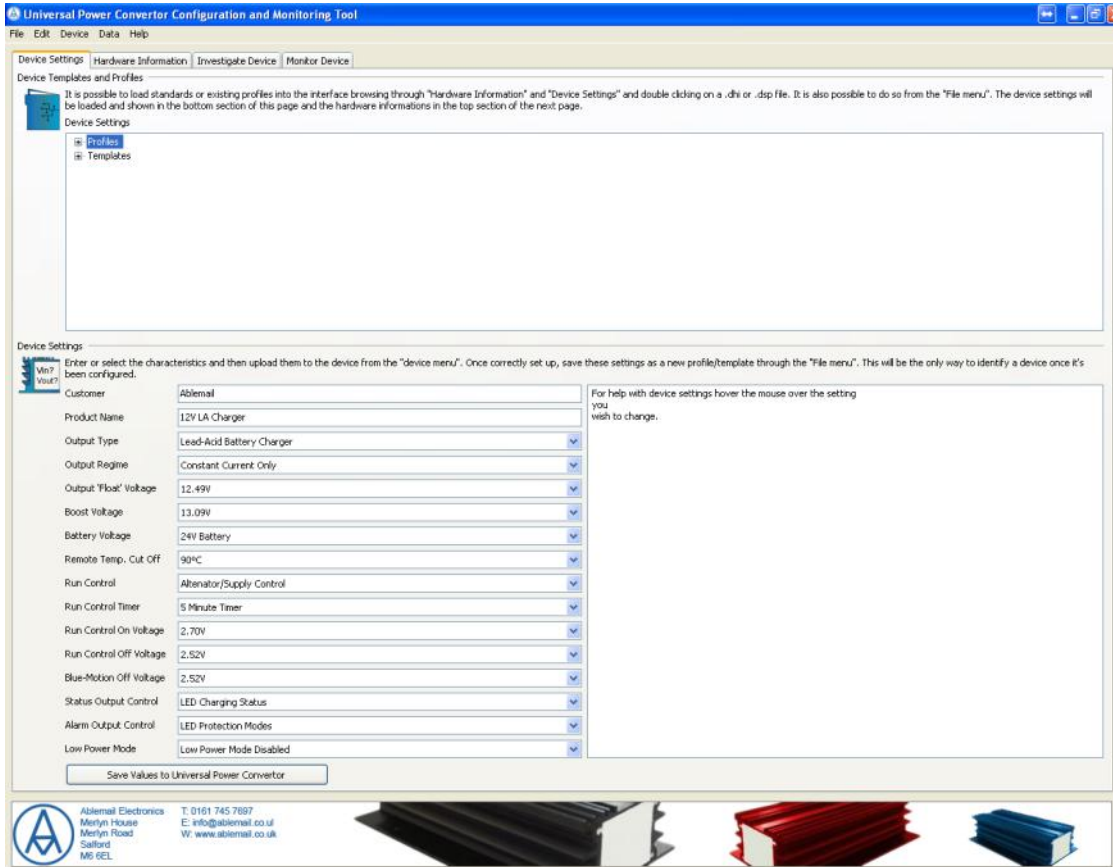


For Guidance on component size Installation & troubleshooting:  
**See 15A converter installation Instructions**

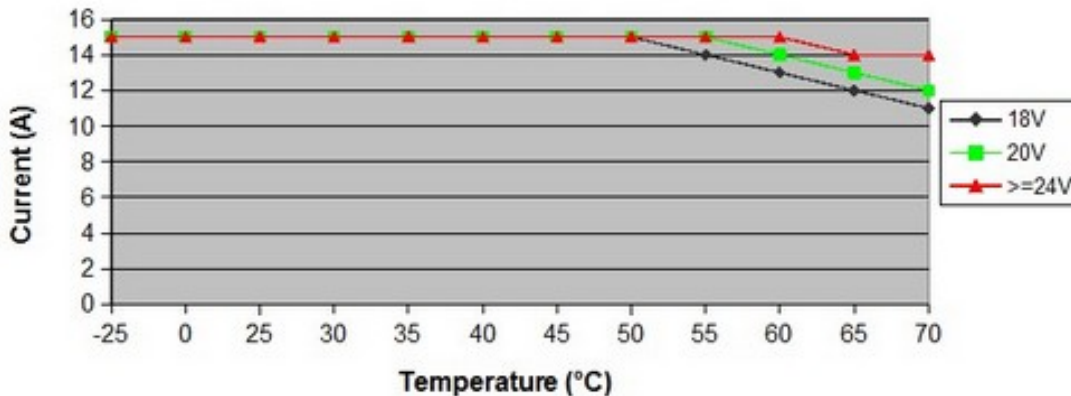


**PART NUMBER : AMR24-24-15**

## ABLEMAIL SOFTWARE INTERFACE (ASI) :



**Maximum Current at 24V Output  
[18V,32V]**



For More Info see Ablemail Universal Power Converter Performance Charts