



Ablemail Electronics

A Division of Merlyn Electronics

Merlyn House,
Merlyn Rd,
Salford, M6 6EL
Tel: +44(0)161 745 7697
Fax: +44(0)161 737 5615
info@ablemail.co.uk
www.ablemail.co.uk

PART NUMBER : AMR12-12-15

DESCRIPTION :

This unit is a software controlled switching type voltage converter intended for use on vehicles with a 12V electrical system to power 12V accessories. The unit can support 15A output loads. The unit has current output overload protection and over temperature protection . Both protection modes reset automatically. If a greater current is required units can be run in parallel or a bigger unit selected from the range

The high speed switching converter provides a low noise output (<50mV) which is very closely regulated against variation of input voltage and changes in output load current This makes the unit suitable for supplying even the most sensitive load. As the unit contains an upconverter it is ideal for supplying loads over long cable lengths with no reduction in output voltage as in caravans and heavy goods vehicles .

The 12V input and 12V outputs share a common negative The output can be be configured to turn on when a vehicle engine is running (engine run detection) or on a voltage signal (Ignition Control) .

An interface can be added to allow remote enable/disable of the output voltage and real time adjustment of the output voltage. The interface has outputs to allows information to be passed to an external power management system . An led indicates when the converter is running and provides fault indication and the Interface card allows remote indication (cab display) to be added or signals to be passed to the other elctronic systems .

A serial interface is fitted as standard and this in conjunction with the **Ablemail Software Interface** allows a customer to make configuration changes. The serial interface and powerful in built microcontroller and software allow the converter to work as the system power management controller . The serial interface also allows external electronicis to control the converter .

The unit is assembled in an aluminium extruded case, this allows reliable operation in harsh vehicle environments and areas of high ambient temperatures. It can be supplied with a variety of connection options see the **Ablemail Hardware Options**

This product is part of a large range and if this product does not meet your requirement, please contact our technical department to see if we can meet your exact needs.

ISOLATION	Non-Isolated									
INPUT VOLTAGE	12Volt nominal vehicle supply (8-32V)									
OUTPUT VOLTAGE	12V \pm 5%									
OUTPUT LOAD CURRENT	15A Continuous									
NO LOAD INPUT CURRENT	Max 2mA @ 12V input									
PROTECTION	Output overload & over temperature protection with fully automatic reset									
OPERATING TEMPERATURE	Maximum 70°C. Minimum -30°C									
STANDARDS	E11 Approval-Immunity requirements UNECE regulation 10 issue 4 Which covers all aspects of EN50489:2010 & CE Approval-Immunity to requirements of EN61204-3									
SIZE AND WEIGHT	Length: 150mm, Height: 38mm, Width: 93mm, 450g									
CONNECTIONS	200mm flying leads of thin wall auto cable. Wiring Connections:									
	<table border="1"> <tr> <td>12V Input</td> <td>Positive</td> <td>Red</td> </tr> <tr> <td>12V Output</td> <td>Positive</td> <td>White</td> </tr> <tr> <td>Common</td> <td></td> <td>Black</td> </tr> </table>	12V Input	Positive	Red	12V Output	Positive	White	Common		Black
12V Input	Positive	Red								
12V Output	Positive	White								
Common		Black								



For Guidance on component size Installation & troubleshooting:
See 15A converter installation Instructions



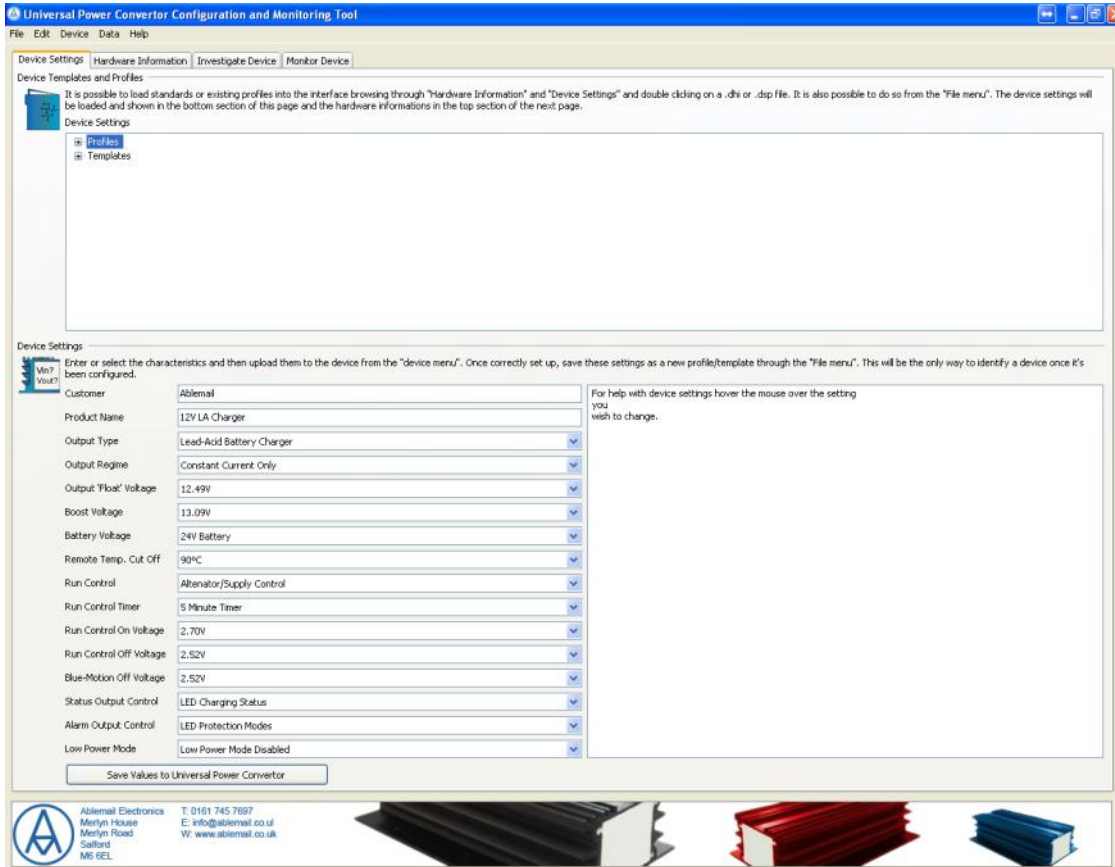
Ablemail Electronics

A Division of Merlyn Electronics

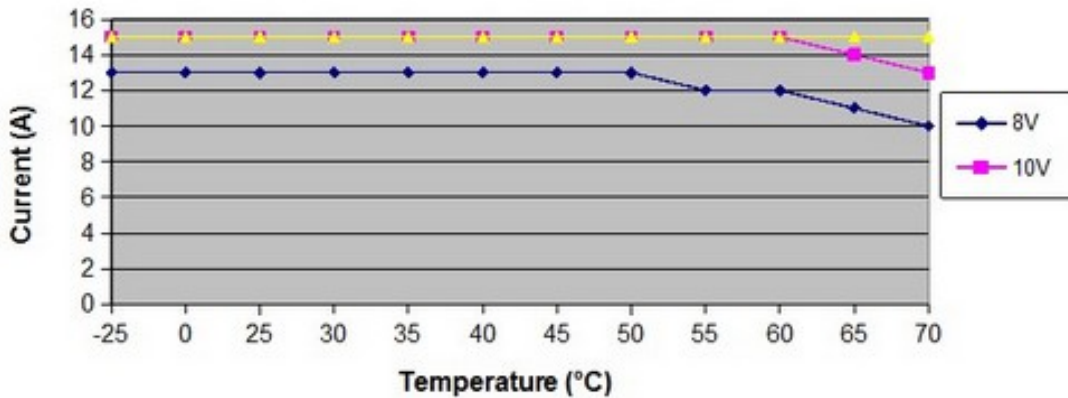
Merlyn House,
Merlyn Rd,
Salford, M6 6EL
Tel: +44(0)161 745 7697
Fax: +44(0)161 737 5615
info@ablemail.co.uk
www.ablemail.co.uk

PART NUMBER : AMR12-12-15

ABLEMAIL SOFTWARE INTERFACE (ASI) :



**Maximum Current at 12V Output
[8V, 14V]**



For More Info see Ablemail Universal Power Converter Performance Charts