



Ablemail Electronics

A Division of Merlyn Electronics

Merlyn House,
Merlyn Rd,
Salford, M6 6EL
Tel: +44(0)161 745 7697
Fax: +44(0)161 737 5615
info@ablemail.co.uk
www.ablemail.co.uk

PART NUMBER : SVSR12V****

DESCRIPTION :

The Smart Voltage Sensing Relay is a programmeable 200A continuous rating 1500A intermittent load switching unit which can be operated for Battery Guard, Load Disconnect, Lithium Charging & many other high current switching applications.

The relay is latching 12V version. The unit draws less than 2mA in standby mode and as the relays are latching there is negligible battery drain whether the relay is open or closed. This is very important for maximising the standby time of the vehicle battery.

The relay has additional inputs which can be configured to allow external control of the relay switching on & off, there is a status led & the option of remote indication (cab display) is included.

The unit is supplied with standard settings but the **Ablemail Software Interface (ASI)** allows adjustment of connect voltage thresholds, timed relay on delays, voltage thresholds thresholds for load disconnect & timed relay off delays & specific customer requirements.

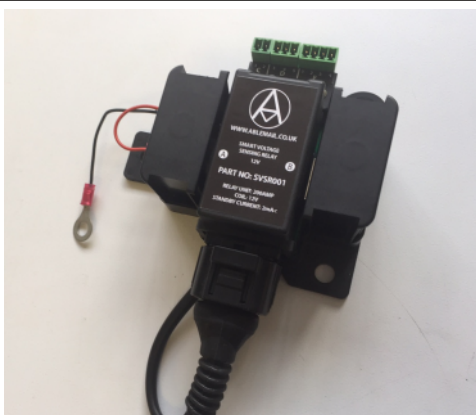
The serial interface as well as adjusting the settings can be used for controlling or being controlled by other Ablemail Electronics products which have a serial interface. This is useful in sophisticated Power Management Systems where multiple systems have to interact in real time It is also suitable for interfacing to Lithium Battery Management & Charging Systems.

A Range Extender Interface can be used to convert the unit into a temperature controlled relay & to replace the standard serial interface with an RS485 interface for use in electrically noisy environments or where parts are separated by more than 2-3m.

The latest Euro 5 & Euro 6 engines have smart alternator & regenerative braking functions which the SVSR001 can monitor & take account of when operating the relay according to the system operation.

This product is part of a large range and if this product does not meet your requirement, please contact our technical department to see if we can meet your exact needs.

ISOLATION	Isolated 500V AC											
INPUT VOLTAGE	12V											
OUTPUT VOLTAGE	12V											
OUTPUT LOAD CURRENT	200A Continuous 1500A for 1 second											
NO LOAD INPUT CURRENT	< 2mA											
PROTECTION	N/A											
OPERATING TEMPERATURE	Maximum 70°C. Minimum -30°C											
STANDARDS	E11 "Waiting for Approval" (In progress).											
SIZE AND WEIGHT	Length: 142.50mm, Height: 44.50mm, Width: 109.50mm, 400g											
CONNECTIONS	IN / OUT / GND Wiring Connections:	<table border="1"> <tr> <td>12V Input</td> <td>Positive</td> <td>Term A</td> </tr> <tr> <td>12V Output</td> <td>Positive</td> <td>Term B</td> </tr> <tr> <td>GND</td> <td>Negative</td> <td>Black</td> </tr> </table>	12V Input	Positive	Term A	12V Output	Positive	Term B	GND	Negative	Black	
12V Input	Positive	Term A										
12V Output	Positive	Term B										
GND	Negative	Black										



The product images shown are for illustration purposes only.
Ablemail Electronics reserves the right to change product images & specifications at any time without notice

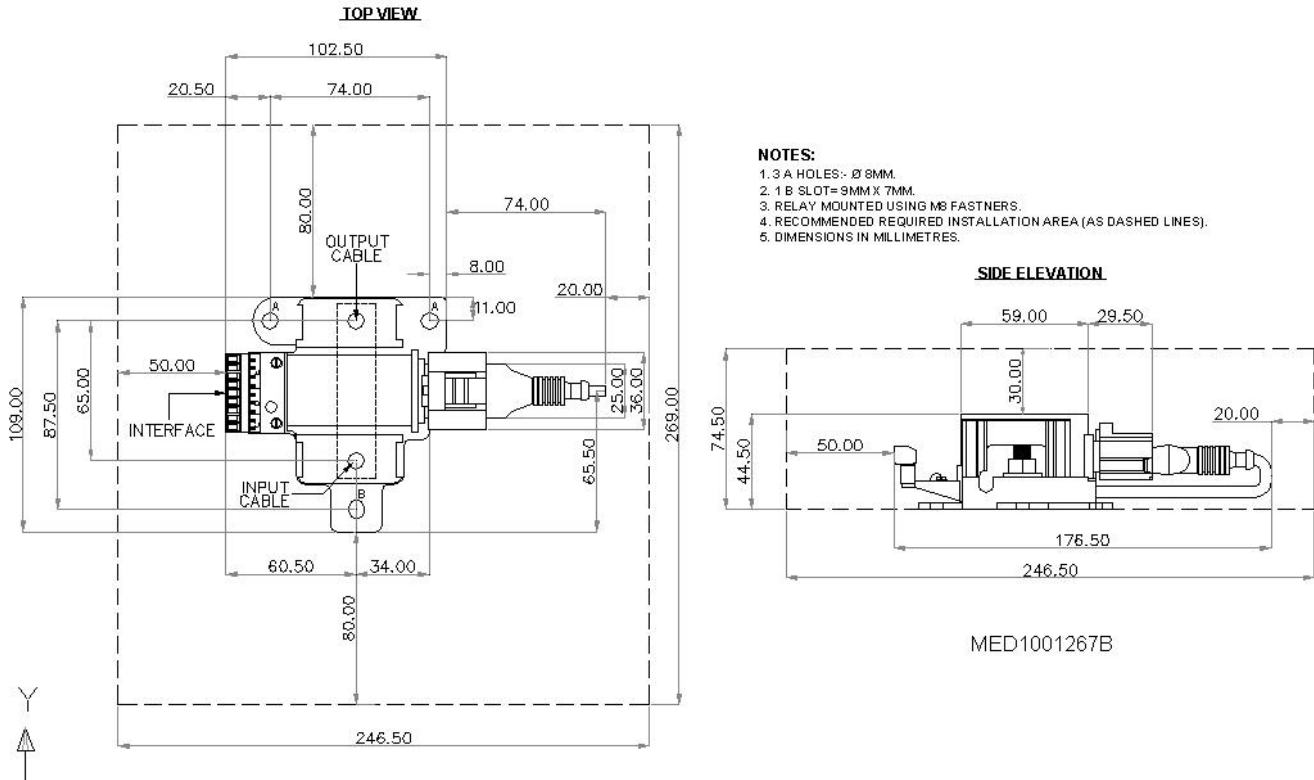


Ablemail Electronics

A Division of Merlyn Electronics

Merlyn House,
Merlyn Rd,
Salford, M6 6EL
Tel: +44(0)161 745 7697
Fax: +44(0)161 737 5615
info@ablemail.co.uk
www.ablemail.co.uk

MECHANICAL ARRANGEMENT :



Electronic Relay Configuration Software for On Site Programming:

